



Socio-economic status of scheduled castes & scheduled tribes in district Almora

Abha Rani¹, H R Kaushal²

¹ Research Scholar, Faculty of Commerce, SSJ Campus, Kumaun University, Nainital, Uttarakhand, India

² Research Supervisor & Assistant Professor, Faculty of Commerce, SSJ Campus, Kumaun University, Nainital, Uttarakhand, India

Abstract

Scheduled Castes & Scheduled Tribes are among the most disadvantage section of Indian society. They face social exclusion, exploitation and other evil practices due to old age practice of untouchability and stratification. Development of India is only depends on the development of all section of people. This is only possible when all section of society have equal opportunities to participate in national economy. Equal opportunities, rights and treatment have significant role for the development of these section of society. The scheduled castes and scheduled tribes comprise 16.6% and 8.6%, respectively of India's population (according to census 2011) out of which 18.5 % scheduled castes live in rural areas and 12.6% lives in urban. 11.3% scheduled tribes live in rural areas and 2.8% live in urban areas.

The top five states/ union territory occupied by scheduled castes population are Punjab (31.9%), Himachal Pradesh (25.2%), West Bengal (23.5%), Uttar Pradesh (20.7%), and Haryana (20.2%) and top five states / union territory consist scheduled tribes population are Lakshadweep (94.8%), Mizoram (94.4%), Nagaland (86.5%), Meghalaya (86.1%) and Arunachal Pradesh (68.8 %). The total population of Almora district was 622, 506. Out of these populations SC population was 150, 995 (24.3%) and ST population was 1, 281 (0.21 %). Out of the total population SC category represents 24.3 per cent while ST category represents only 0.21 percent. The objective paper is an attempt to know the socio-economic status of SCs and STs in Almora district of Uttarakhand.

Keywords: socio-economic status, scheduled castes, scheduled tribes, population & development

Introduction

In the state of Uttarakhand, Almora is a municipal board and Cantonment town. Administrative headquarters are situated in Almora district. The distance of district from the national capital New Delhi is 363 km by NH-9 and 415 km via Saharanpur road and 388.6 km via Ambala- Dehradun-Haridwar road from the state capital Dehradun.

Almora also called Sanskritik Nagari or cultural capital of Uttarakhand having unforgettable natural beauty, arts, cuisine, handicrafts, bio-diversity and historical monuments and one of the most popular hill station of Uttarakhand. District is well connected by roads with all the major cities of India. The nearest railway-station Kathgodam is 90 kms & the nearest airport in Pantnagar is 127 kms from Almora [1].

There are eleven blocks in Almora district. The district is divided in rural and urban areas. District of Almora is divided into nine tehsils: Almora, Bhikiyasain, Bhanoli, Chaukhutiya, Dwarahat, Jainti, Ranikhet, Someshwar, and Sult and eleven blocks: Bhaisiachhana, Bhikiasain, Chaukhutia, Dhauladevi, Dwarahat, Hawalbag, Lamgara, Sult, Syaldey, Takula, Tarikhet [2].

The total population of Almora district is 6.23 Lac having literacy rate 74.53% as per 2011 census.

Out of the total population 622, 506 of Almora district, 150, 995 or 24.26 per cent belong to the Scheduled Castes which are above the state average of 18.76 per cent as per 2011 Census. The listed caste rate is 25.16% of the rural population. and 16.15% of the local urban population. At the Tehsil level, this proportion ranges from 16.78% in

Bhikiyasain to 31.58% in Someshwar. On the other hand, the Takula region (33.40) had the highest SC population proportion of 11 CD blocks, followed by Bhaisiya Chana (30.64), Dhauladevi (28.66) and Hawal Bagh (28.56) population compared to the regional average. The lowest proportion of SC population is in the Syalde CD. block (15.01%). The proportion of population distribution in South Caucasus by city varies from 20.48 in Dwarahat (NP) to 11.07 in Almora (CB). In the Almora region, SC's 10-year population growth rate was 7.00% for 2001-2011, well below the state average of 24.74. The 10-year SC growth for rural and urban areas is 6.10 and 21.25%, respectively.

According to the 2011 census, the sex ratio of the UK population is approximately 1077 women to every 1, 000 men across the region, with rural (1084) of the NC population higher than urban (983). According to the 2011 census, the proportion of illiteracy in the population of the South Caucasus in the region is 80.47 (92.86 men, 69.93 women) and 94.35% in urban areas (97.16 men and 91.03 women). Men's literacy in these areas is higher than women's, usually in rural and urban areas. There is a significant gap of 24.38 percentage points in literacy among men and women in rural areas compared to that of men and women in urban areas (6.13 percentage points).

Out of the total population 622, 506 of Almora district merely 1281 or 0.21 per cent belong to Scheduled Tribes as per 2011 Census. The percentage distribution of ST population is 0.13 and 0.85 in rural and urban areas respectively. In this district, the ST population is principally concentrated in Almora (0.48 per cent), Someshwar (0.2 per

cent) and Ranikhet (0.18 per cent). In remaining Tehsil the proportion of ST population is negligible. At C.D. block level, the highest percentage (0.45) of ST population is observed in Hawal Bagh and is followed by Takula (0.21) and Tarikhet (0.17) while the lowest proportion of Scheduled Tribes is recorded in Sult C.D. block (0.01 per cent). Thus, the ST population in Almora district is mainly distributed in Hawal Bagh, Takula and Tarikhet C.D. blocks. The town-wise percentage share of ST population has been recorded 2.13 as maximum in Khatyari (CT) and 0.23 as minimum in Ranikhet (CB). The decadal growth rate of Scheduled Tribes is 45.9 per cent during 2001-2011. The decadal growth rate among ST population for rural and urban areas are 53.7 and 36.2 per cent respectively. The sex ratio among Scheduled Tribes had risen rapidly

from 905 in 2001 to 1024 females per 1000 males in 2011. The similar increasing trend is also observed in rural (from 914 in 2001 to 1060 in 2011) as well as in urban (from 893 in 2001 to 974 in 2011) areas of the district. In Almora district, the proportion of literacy among ST population comes to 90.20 which are over the corresponding rate of 75.33 per cent in case of Scheduled Castes. The gap in male and female literacy rate 13.52 percentage points is also less than that of Scheduled Castes (24.08 percentage points). The literacy rate of cent per cent is in 4 C.D. blocks viz; Bhikiyasain, Sult, Bhaisiya Chhana and Dhauladevi while the lowest 80.39 per cent in Lamgarha C.D. block. The gap in male/female literacy rate in Hawal Bagh is 9.32 percentage points and in case of Lamgarha the gap is highest of 37.46 percentage points^[3].

Table 1: Total SCS and STS (Rural) population in c d. blocks (2011)

Sl No.	Name of C D. block	Total population	Total scheduled castes population	Total scheduled tribes population	Total SC & ST population	% of SC & ST population to total population
1.	Syaldey	44747	6716	15	6731	15
2.	Chaukhutiya	46039	8970	42	9012	19.57
3.	Bhaikiyasain	32847	6395	18	6413	19.52
4.	Tarikhet	66831	17297	116	17413	26
5.	Sult	56095	11192	6	11198	19.96
6.	Dwarahat	60066	16378	67	16445	27.37
7.	Takula	45883	15326	97	15423	33.61
8.	Bhaisiyachhana	26634	8160	7	8167	30.66
9.	Hawalbagh	67447	19264	302	19566	29
10.	Lamgarha	52169	13690	59	13797	26.44
11.	Dhauladevi	60620	17372	19	17391	28.68
12.	Block Almora	814	171	2	173	21
	District (Rural) Total: Almora	560192	140931	750	141681	25

Source: Census 2011

Review of Literature

1. B B. Mohanty (2001)^[4]

studied about "Land Distribution among Scheduled Castes and Tribes" and revealed that there is no significant improvement in land holding among scheduled castes and scheduled tribe even after the 50 years of planned initiatives and policy measure, in some states it has declined further. Lack of landholding is the main cause of their vulnerability, injustice and exploitation of these communities by others. Attempts have been made by the union and state governments to promote and protect their rights with regard to the control and use of land but there is no significant improvement.

2. Sukhadeo Thorat (2002)^[5]

In his study "Oppression and Denial: Dalit Discrimination in the 1990s" revealed that in rural India the behavior of upper castes Hindu still governed by traditional norms and codes of the caste system. In rural areas practices of castes system or discrimination can be observed in various ways such as separate location of residential places of upper castes and dalit, restricted entry in temple or in tea shops, no social gathering between upper castes and dalit, employment, wage rate, share of rent, rate of interest charged and in sale of items from shops owned by untouchables. Author mentioned that Progressive legislation and constitutional safeguards have done little to rid the social order of the widespread evil of caste discrimination.

3. 7. K Sundaram and Suresh D. Tendulkar (2003)^[6]

In their paper titled "Poverty among Social and Economic Groups in India in the 1990s," they looked at the levels and changes in poverty indicators for the rural and urban populations in India, disaggregated by social and economic groups. Their study was focused on comparable estimates of poverty for the mixed reference period computed from unit record data from the National Sample Survey Organization's Consumer Expenditure Surveys' 50th (1993-94) and 55th (1999-2000) rounds. They discovered that households belonging to the scheduled caste and scheduled tribes were the social groups with the highest levels of poverty in both the rural and urban populations, while agricultural labor households (rural) and casual labor households (urban) were the economic groups with the lowest levels of poverty. In terms of changes in poverty, it was discovered that while poverty among scheduled castes, agricultural labor (rural), and casual labor (urban) households declined in line with the overall population in 1990, scheduled tribe households performed poorly in both segments.

4. Sukhadeo Thorat and Katherine S. Newman (2007)^[7]

provided a theoretical introduction to castes discrimination in their study titled "Caste and Economic Discrimination: Causes, Consequences and remedies" and they focused on contemporary patterns of discrimination in the formal labour market. Author mentioned that discrimination and social exclusion play significant role in economic development of disadvantaged group. Dalit are vulnerable section of society and faced discrimination in labour market in different forms.

There is needed to take affirmative action to stop discrimination in formal labour market as a remedial measures suggested by the author.

Objectives of the Study

To study the socio-economic status of scheduled castes and scheduled tribe in Almora District.

Research Methodology

To study the ‘‘Socio-Economic Status of Scheduled castes & Scheduled Tribes in District Almora’’, following systematic and scientific methodology was conducted. The Research Methodology can be described in following aspects:

- Selecting the Sample
- Development of the Tool
- Pilot Study
- Data Collection
- Categorization of the Variables
- Analysis of the Data
- **Selecting the Sample**

Total sample selected from different blocks of district to know the Socio-Economic Status of Scheduled castes & Scheduled Tribes were 382 respondents.

Development of the tool

For this purpose, first of all the researcher conducted an informal survey among the selected sample. She met some of them personally and obtained information about them, their family and their work. The details were roughly jotted down at all such meetings. This helped the researcher to formulate the tool and gave an idea of what items to include in the tool.

It was decided that the data will be collected with the help of interview cum schedule

Pilot study

Fifty Scheduled Castes and Scheduled tribes were selected randomly from the list prepared by the researcher for pilot study. Interviews of these SC & ST were conducted with the help of the tool prepared. The tool was analyzed in terms of clarity, detailing, space provided, language used and time taken. Few modifications were made in the interview schedule on the basis of this pilot study.

Data collection

Both primary as well as secondary data, relevant to the study are collected. Primary data is collected through detailed and comprehensive questionnaires cum interview schedule which was tested by conducting pilot study of 50 sample whereas secondary data collected through, visiting various government offices which include Social Welfare Department, District Industrial Centre, Tourism Department, Village and Khadi Development, Udhyan Anubhag/ Horticulture Department in district Almora and Government bulletins, gazettes, District statistics survey report, journals, Magazines, published books and web sites.

Categorisation of variables

There were two categories of variable that is independent and dependent variables. This was identified prior to data collection.

Socio-Economic status was dependent variable which was depend on several independent variables which included age, gender, marital status, qualification, castes, type of

family, total members in the family, type of house, agricultural land they hold and annual family income. This helps the researcher to know the Socio-Economic status of SC & ST in different block of the district.

Analyses of the data

The complete data on selected Scheduled Castes and scheduled Tribes in different blocks of Almora district was obtained using interview schedule. Collected data were coded and transferred in computer using SPSS software. It was analyzed using frequencies and percentage. The derived results were converted into table, Bar, and Pie charts. Derived results were explained and interpreted.

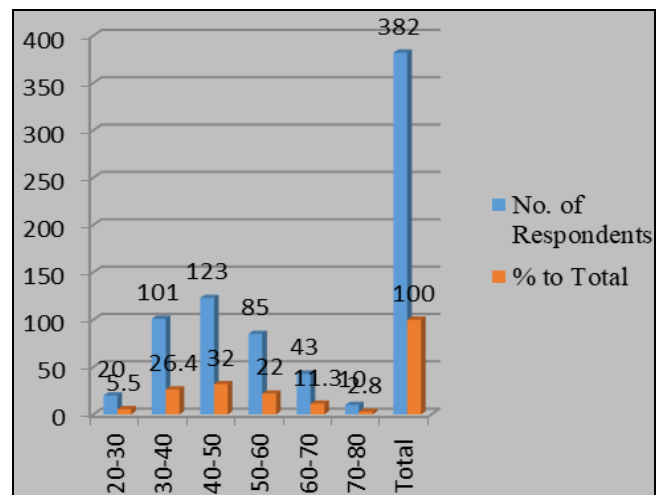
Data analysis and interpretation

Objective: To study the socio-economic status of scheduled castes and scheduled tribe in Almora District.

Table 2: Distribution of Respondents as per their age

S. no.	Age in years	No. of respondents	% To total
1	20-30	20	5.50
2	30-40	101	26.4
3	40-50	123	32
4	50-60	85	22
5	60-70	43	11.3
6	70-80	10	2.8
	Total	382	100

Source: Primary data



Source: Table No 2

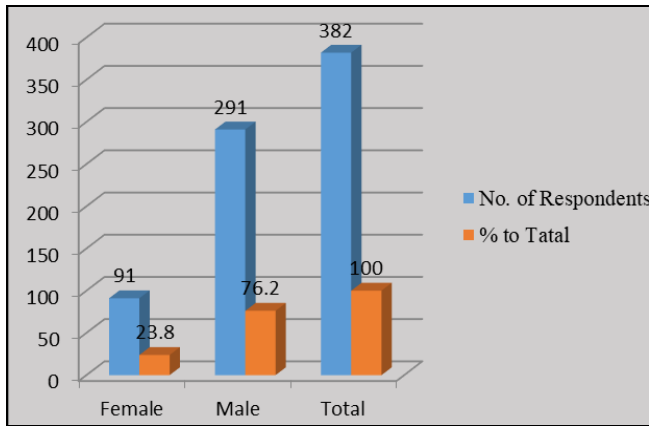
Graph 1: Distribution of respondents as per their age

The above Table No. 1.2 shows the distribution of selected respondents as per their age. The table shows that out of 382 respondents 20 (5.50 %) respondents were from the age group of 20 to 30 years followed by 101 (26.4%) respondents were from 30 to 40 age group, 123 (32.00%) respondents were from 40 to 50 age group, 85 (22.00%) respondents belongs to the age groups of 50 to 60 and 43 (11.30 %) respondents were from the age group of 60 to 70 and 10 (2.8 %) respondents were from 70 to 80 age group.

Table 3: Distribution of Respondents as per their Gender

S. no.	Gender	No. of respondents	% To total
1	Female	91	23.8
2	Male	291	76.2
	Total	382	100

Source: Primary Data



Source: Table No 3

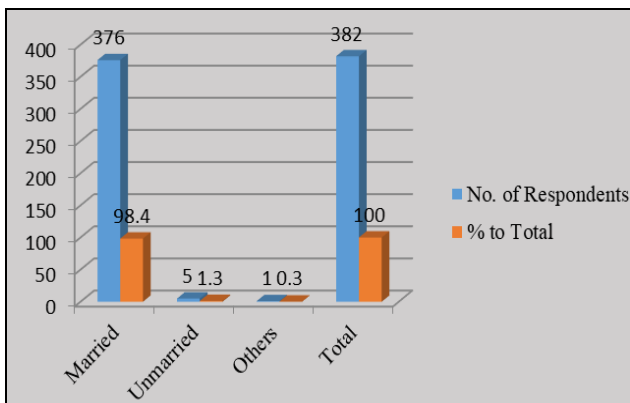
Graph 2: Distribution of respondents as per their gender

The above Table No 3 shows the distribution of respondents as per their gender. The table shows that out of 382 respondents 91 (23.8 %) respondents were from the female gender and 291 (76.2 %) were from male.

Table 4: Distribution of Respondents as per their Marital Status

S. No.	Marital status	No. of respondents	% To total
1	Married	376	98.4
2	Unmarried	5	1.3
3	Others	1	0.3
	Total	382	100

Source: Primary Data



Source: Table No 4

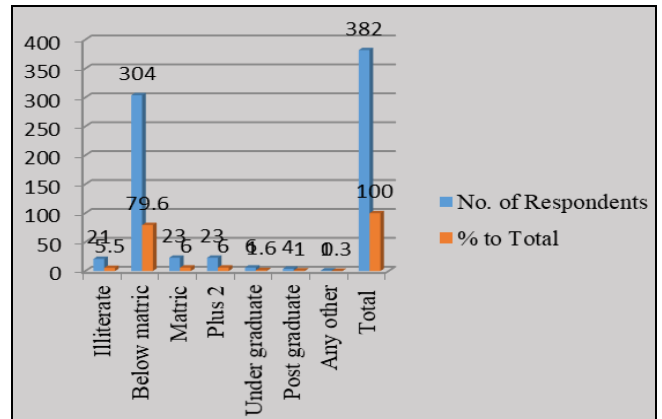
Graph 3: Distribution of Respondents as per their Marital Status

The above Table No. 4 shows the distribution of respondents as per marital status. The table shows that out of 382 respondents 376 (98.4 %) respondents were married followed by respondents who were unmarried that is 5 (1.3%) and 1 (0.3%) was from others category (Include widow, widower, divorce and separated individuals).

Table 5: Distribution of Respondents as per their Education Qualification

S. no.	Education qualification	No. of respondents	% TO total
1	Illiterate	21	5.5
2	Below matric	304	79.6
3	Matric	23	6.0
4	Plus 2	23	6.0
5	Under graduate	6	1.6
6	Post graduate	4	1.0
7	Any other	1	0.3
	Total	382	100

Source: Primary Data



Source: Table 5

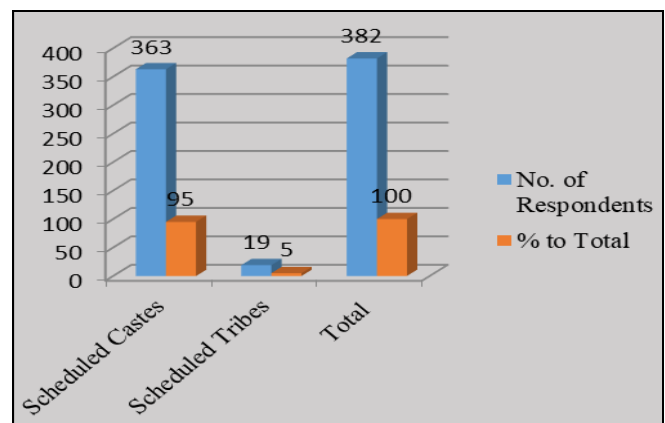
Graph 4: Distribution of Respondents as per their Education Qualification

The above Table No 5 shows the distribution of selected respondents as per their educational qualification. The table shows that out of 382 respondents 21(5.50 %) respondents were uneducated followed by 304 (79.6%) respondents were below matric qualification, 23 (6.00%) respondents were matric passed, 23(6.00%) respondents had plus 2 qualified, 6 (1.6%) respondents had under graduate qualification and 4 (1.00 %) respondents had post graduated qualification and 1 (0.3) had any other qualification such as vocational training, technical degree, and any other advanced degree.

Table 6: Distribution of Respondents as per their Castes

S. No.	Castes of Respondents	No. of Respondents	% to Total
1	Scheduled Castes	363	95.0
2	Scheduled Tribes	19	5.0
	Total	382	100

Source: Primary Data



Source: Table 6

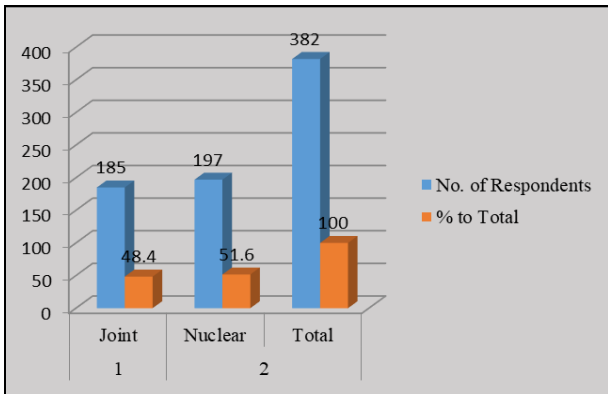
Graph 5: Distribution of Respondents as per their Castes

The above Table No. 6 shows the distribution of respondents as per their castes. The table shows that out of 382 respondents 363(95.00 %) respondents were Scheduled Castes followed by 19 (5.00%) respondents were from Scheduled Tribes category.

Table 7: Distribution of Respondents as per their family type

S. no.	Type of family	No. of respondents	% to Total
1	Joint	185	48.4
2	Nuclear	197	51.6
	Total	382	100

Source: Primary Data



Source: Table 7

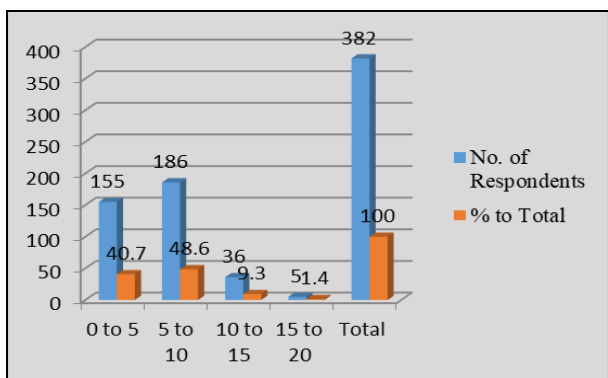
Graph 6: Distribution of Respondents as per their family type

The above Table No. 7 shows the distribution of respondents as per their family type. The table shows that out of 382 respondents 185(48.4 %) respondents had joint family followed by 197 (51.6%) respondents had nuclear family.

Table 8: Distribution of Respondents as per No. of members in their family

S. No.	Range of members	No. of respondents	% to Total
1	Up to 5	155	40.7
2	5 to 10	186	48.6
3	10 to 15	36	9.3
4	15 to 20	5	1.4
	Total	382	100

Source: Primary Data



Source: Table 8

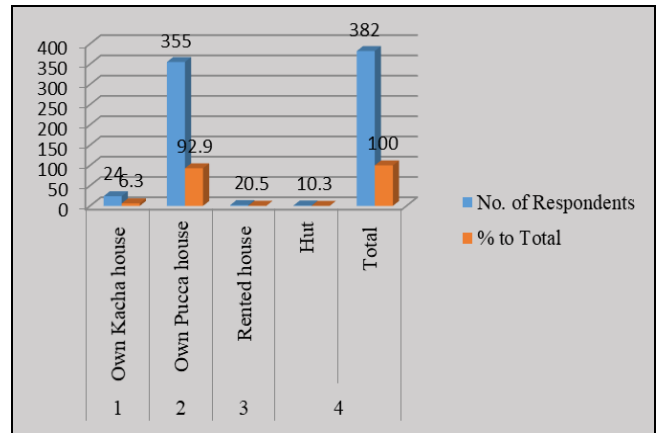
Graph 7: Distribution of Respondents as per No. of members in their family

The above Table No. 8 shows the distribution of respondents as per numbers of members in their family. The table shows that out of 382 respondents 155 (40.7 %) respondents had upto 5 member followed by 186(48.6%) respondents who had 5 to 10 members in their family, 36 (9.3%) respondents had 10 to 15 members in their family followed by respondents 5 (1.4%) who had 15 to 20 members in their family.

Table 9: Distribution of Respondents as per Type of House they own

S.no.	Type of house	No. of respondents	% to Total
1	Own Kacha house	24	6.3
2	Own Pucca house	355	92.9
3	Rented house	2	0.5
4	Hut	1	0.3
	Total	382	100

Source: Primary Data



Source: Table 9

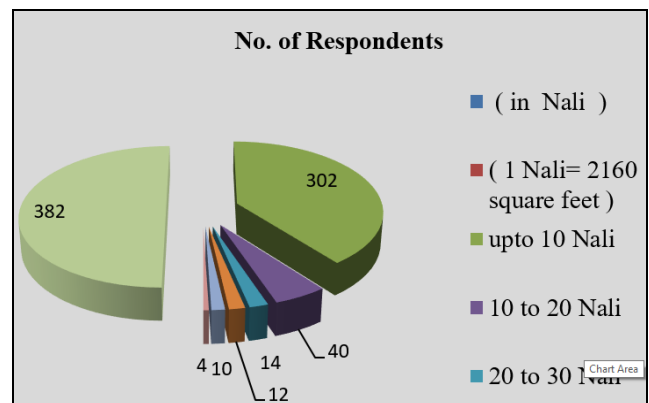
Graph 8 Distribution of Respondents as per Type of House they own

The above Table No. 9 shows the distribution of respondents as per the house they own. The table shows that out of 382 respondents 24(6.3 %) respondents had own kacha house followed by 355(92.9 %) respondents who owned pucca house, 2 (0.5 %) respondents resided in rented houses followed by respondents 1 (0.3%) who had hut in the district.

Table 10: Distribution of Respondents as per Agricultural land they hold

S. no.	Agricultural land (in Nali) (1 Nali= 2160 square feet)	No. of respondents	% to Total
1	Up to 10 Nali	302	79.05
2	10 to 20 Nali	40	10.47
3	20 to 30 Nali	14	3.66
4	30 to 40 Nali	12	3.14
5	Above 40 Nali	10	2.61
6	No agricultural land	4	1.07
	Total	382	100

Source: Primary Data



Source: Table 10

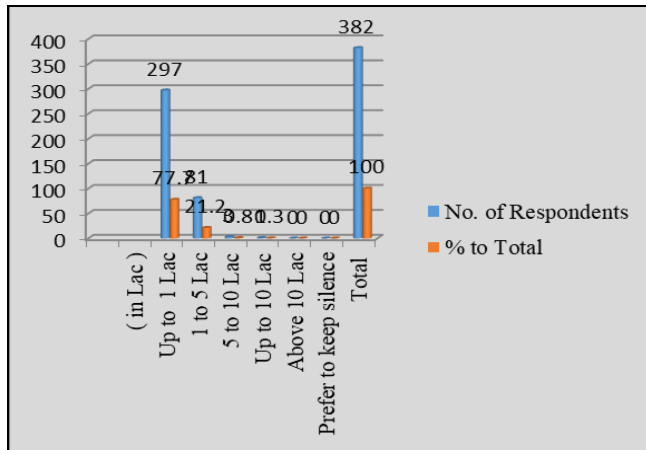
Graph 9: Distribution of Respondents as per Agricultural land they hold

The above Table No. 10 shows the distribution of respondents as per the agricultural land they hold. The table shows that out of 382 respondents 302(79.05%) hold land up to 10 Nali, 40 (10.47%) respondents hold land 10 to 20 Nali, 14 (3.66%) hold 20 to 30 Nali, 12 (3.14%) hold 30 to 40 Nali, and 10 (2.61 %) hold above 40 Nali. There were 4 (1.07 %) respondents did not hold any agricultural land in the district.

Table 11: Distribution of Respondents as per their Annual Income

Sl. No.	Annual Income of Respondents (in Lac)	No. of Respondents	% to Total
1	Up to 1 Lac	297	77.7
2	1 to 5 Lac	81	21.2
3	5 to 10 Lac	3	0.8
4	Up to 10 Lac	1	0.3
5	Above 10 Lac	0	0
6	Prefer to keep silence	0	0
	Total	382	100

Source: Primary Data



Source: Table 11

Graph 10: Distribution of Respondents as per their Annual Income

The above Table No. 11 shows the distribution of respondents as per their annual family income. The table shows that out of 382 respondents 297 (77.7 %) respondents had annual income of 1lac, followed by respondents who had annual family income of 1to5 lac were 81 (21.2%), 3 (0.8%) respondents had annual income of 5to10lac, only 1 (0.3%) respondents had annual family income of up to Rs 10 lac. No respondents found having annual family income of above10 lac. All respondents responded for the queries (0% prefer to keep silent).

Conclusion

1. It is concluded that majority of the respondents who were running business in the district, 123 (32.00%) are in the age group of 40 to 50 age group.
2. It is concluded that majority of the respondents who were selected for study were 291 (76.2%) male.
3. It is concluded that majority of the respondents who were running business in the district, 376 (98.4%) are married.
4. It is concluded that majority of the respondents who were running business in the district, 304 (79.6%) have below matric qualification. This section mainly consist respondents who had primary or eights pass.
5. It is concluded that majority of the respondents in the district, 363 (95.0%) are Scheduled Castes and 19 (0.5%) are Scheduled Tribes. Scheduled Tribes population in the district is merely 0.21%.
6. It is concluded that majority of the respondents had 186(48.6%) had 5 to 10 members in their family.
7. It is concluded that majority of the respondents in the district, 355(92.9 %) owned pucca house.
8. It is concluded that majority of the person 302

(79.05%), belongs to SC / ST communities hold up to 10 Nali land in the district.

9. It is concluded that majority of the respondents 297 (77.7%), belongs to SC / ST communities in the district have annual income of up to 1 lac.

Reference

1. www.euttranchal.com
2. http://censusindia.gov.in/2011census
3. http://censusindia.gov.in/2011census
4. Mohanty BB. Land distribution among scheduled castes and tribes. Economic and Political Weekly, 2001, 3857-3868.
5. Xaxa V. Protective discrimination: Why scheduled tribes lag behind scheduled castes. Economic and Political weekly, 2001, 2765-2772.
6. Thorat S. Oppression and denial: Dalit discrimination in the 1990s. Economic and Political Weekly, 2002, 572-578.
7. Thorat S, Newman KS. Caste and economic discrimination: causes, consequences and remedies. Economic and Political Weekly, 4121-4124.
8. Rani A. Contribution of Government Sponsored Welfare Schemes for Scheduled Castes and Scheduled Tribes in Entrepreneurial Development with special reference to Almora District: A pilot Study. International Journal of Advanced Research and Development, 2020:5(06):01-06. ISSN 2455-4030.